



Verschraubungen Zubehör

Alle nachfolgenden Verschraubungen und -Zubehör haben folgende Merkmale:

- Werkstoff **Messing/ vernickelt,**
- Gewindeform **zylindrisch,**
- Gewinde-Norm **M-DIN 13,**
- G-DIN ISO 228**
- Druckstufe **16 bar**

Abb. 1
Muffe

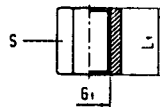


Abb. 2
Muffe-reduziert

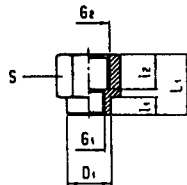


Abb. 3
Doppelnippel

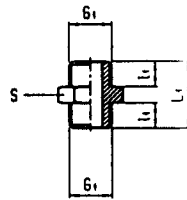


Abb. 4
Doppelnippel-
reduziert

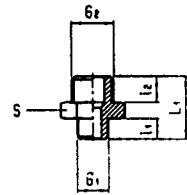


Abb. 5
Reduziernippel

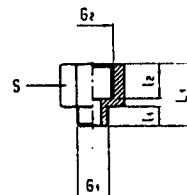


Abb. 6
Reduziernippel

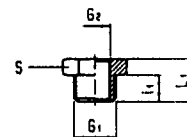


Abb. 7
Verschlußschraube

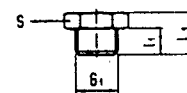


Abb. 8
Verschlußnippel

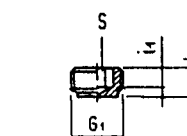


Abb. 9
Verschlußmutter

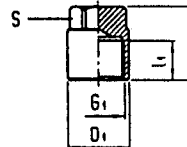
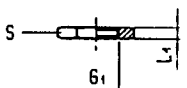


Abb. 10
Konter-Mutter



Anschlüsse/ Abmessungen-mm										
Bestell-Nr.	Abb.	G/G1	G2	L/L1	I1	I2	D1/d1	d2	S (1)	Preis €
D 0947	1	M5		11					8	0,50
D 0451	1	G1/8		15					14	0,75

D 0443	2	M5	G1/8	13					14	0,65
D 0548	2	G1/8	G1/4	19					17	0,80
K 0272	2	M8x1	G1/4	19					17	1,25

D 0716	3	M5		11,5	4				8	0,50
D 0849	3	G1/8		16	6				14	0,75

D 0471	4	M5	G1/8	14,5	4	6			14	0,65
D 0284	4	G1/8	G1/4	19	6	8			17	0,80

D 1098	5	M5	G1/8	14,5	4				14	0,65
D 0751	5	G1/8	G1/8	17	6				14	0,80
D 0752	5	G1/4	G1/4	22,5	8				17	0,85

D 0449	6	G1/8	M5	10,5	6				14	0,65
K 1097	6	G1/4	M5	13	9				17	0,85
K 0480	6	G1/4	M8x1	13	8				17	0,95
D 0450	6	G1/4	G1/8	13	8				17	0,85
K 0444	6	G3/8	M5	13	9				19	0,95
D 0306	6	G3/8	G1/8	14	9				19	0,85

D 0797	7	M5		8	4,5				8	0,40
K 0762	7	M8x1		10	6,5				14	0,95
D 0798	7	G1/8		10	6,5				14	0,55
D 0799	7	G1/4		13	9				17	0,60

D 0851	8	G1/8		8	5				5 (2) 6 o.7 (2)	0,40 0,45
D 0582	8	G1/4		11	7					

D 0800	9	G1/8		11	7,5				12	0,55
--------	---	------	--	----	-----	--	--	--	----	------

D 0995	10	M5		2,7					8	0,25
D 0532	10	M8x1		3,8					13	0,35
D 0533	10	M10x1		4,0					13	0,35
D 0468	10	G1/8		4,5					14	0,35
D 0534	10	G1/4		5,0					17	0,40

D 1096	11	M5		18	5,0	11		3,3	10	3,50
D 0770	11(2)	G1/8		25	7,0	15,5		4,5	16	4,50

(1)-Größe Doppelmaulschlüssel (2)-Größe 6-kantschlüssel (2)-aus Alu

Abb. 11
Block-Verteller 4-fach

